



Wee 2 Polyclonal Antibody

Catalog No	YP-Ab-15033
Isotype	IgG
Reactivity	Human;Rat;Mouse;
Applications	WB;ELISA
Gene Name	WEE2
Protein Name	Wee1-like protein kinase 2
Immunogen	The antiserum was produced against synthesized peptide derived from human WEE2. AA range:151-200
Specificity	Wee 2 Polyclonal Antibody detects endogenous levels of Wee 2 protein.
Formulation	Liquid in PBS containing 50% glycerol, 0.5% BSA and 0.02% sodium azide.
Source	Polyclonal, Rabbit,IgG
Purification	The antibody was affinity-purified from rabbit antiserum by affinity-chromatography using epitope-specific immunogen.
Dilution	Western Blot: 1/500 - 1/2000. ELISA: 1/5000. Not yet tested in other applications.
Concentration	1 mg/ml
Purity	≥90%
Storage Stability	-20°C/1 year
Synonyms	WEE2; WEE1B; Wee1-like protein kinase 2; Wee1-like protein kinase 1B; Wee1B kinase
Observed Band	60kD
Cell Pathway	Nucleus .
Tissue Specificity	Expressed in oocytes (at protein level) (PubMed:29606300). May also be expressed in testis (PubMed:11029659).
Function	catalytic activity:ATP + a [protein]-L-tyrosine = ADP + a [protein]-L-tyrosine phosphate.,function:Phosphorylates and inhibits CDC2. May act as a negative regulator of entry into mitosis (G2 to M transition).,PTM:Phosphorylated .,similarity:Belongs to the protein kinase superfamily. Ser/Thr protein kinase family. WEE1 subfamily.,similarity:Contains 1 protein kinase domain.,tissue specificity:Expressed in testis.,
Background	catalytic activity:ATP + a [protein]-L-tyrosine = ADP + a [protein]-L-tyrosine phosphate.,function:Phosphorylates and inhibits CDC2. May act as a negative regulator of entry into mitosis (G2 to M transition).,PTM:Phosphorylated .,similarity:Belongs to the protein kinase superfamily. Ser/Thr protein kinase family. WEE1 subfamily.,similarity:Contains 1 protein kinase domain.,tissue specificity:Expressed in testis.,



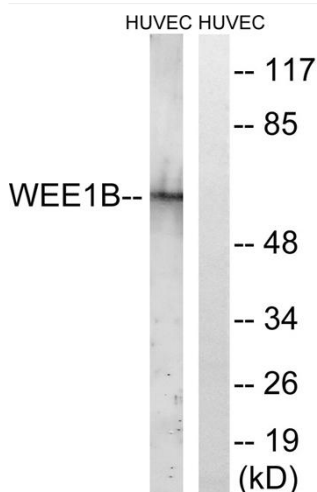
matters needing attention

Avoid repeated freezing and thawing!

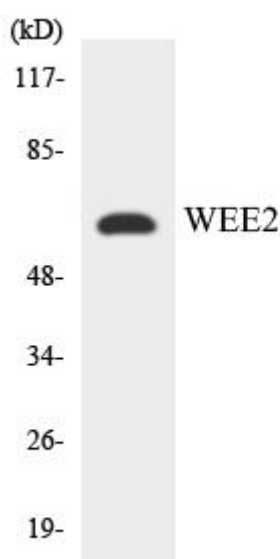
Usage suggestions

This product can be used in immunological reaction related experiments. For more information, please consult technical personnel.

Products Images



Western blot analysis of lysates from HUVEC cells, using WEE2 Antibody. The lane on the right is blocked with the synthesized peptide.



Western blot analysis of the lysates from K562 cells using WEE2 antibody.